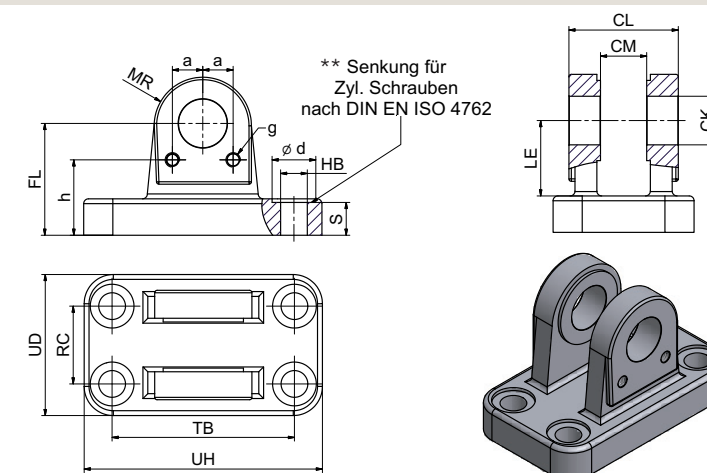


Gabel-Lagerböcke 180°
Form A, ISO 8132
Material: GGG 50

Clevis bracket 180°
Form A, ISO 8132
material: GGG 50



Serie/Series CBA**

| Bezeichnung/ Designation | Nennkraft/ Nominal force [kN] | für Kolben-Ø, Kolbenst.-Ø piston-Ø, rod-Ø | | | Abmessungen / Dimensions mm | | | | | | | | | | | | | | | | | Gewicht/ Weight ≈ kg |
|-----------------------------|----------------------------------|--|------------------|------------------|-----------------------------|-----------|-----------|------------|-----------|----|------|-------------------|-------------------|------------|------------|-------------------|-------------------|------|-----|------|--------|----------------------------|
| | | 100 bar | 160 bar | 250 bar | CK H9 | CL h16 | CM A12 | FL js12 | HB H13 | Ød | S | LE _{min} | MR _{max} | RC js14 | TB js14 | UD _{max} | UH _{max} | a | g | h | | |
| CBA10 | 5 | 25/12 | | | 10 | 24 | 10 | 32 | 6,6 | 11 | 9 | 22 | 10 | 17 | 42 | 33 | 60 | 5,5 | M5 | 22,5 | 0,250 | |
| CBA12 | 8 | 32/14 | 25 14 18 | | 12 | 28 | 12 | 34 | 9 | 15 | 11 | 22 | 12 | 20 | 50 | 40 | 70 | 5,5 | M5 | 24,5 | 0,280 | |
| CBA16 | 12,5 | 40/18 | 32 18 22 | | 16 | 36 | 16 | 40 | 11 | 18 | 12 | 27 | 16 | 26 | 65 | 50 | 90 | 8 | M6 | 28,5 | 0,590 | |
| CBA20 | 20 | 50/22 | 40 22 28 | | 20 | 45 | 20 | 45 | 11 | 18 | 13,5 | 30 | 20 | 32 | 75 | 58 | 98 | 12,5 | M6 | 31 | 0,780 | |
| CBA25 | 32 | 63/28 | 50 28 36 | 40 22 28 | 25 | 56 | 25 | 55 | 13,5 | 20 | 16,5 | 37 | 25 | 40 | 85 | 70 | 113 | 12,5 | M6 | 38,5 | 1,39 | |
| CBA32 | 50 | 80/36 | 63 36 45 | 50 32 36 | 32 | 70 | 32 | 65 | 17,5 | 26 | 20 | 43 | 32 | 50 | 110 | 85 | 143 | 15 | M6 | 45 | 2,49 | |
| CBA40 | 80 | 100/45 | 80 45 56 | 63 40 45 | 40 | 90 | 40 | 76 | 22 | 33 | 22 | 52 | 40 | 65 | 130 | 108 | 170 | 21 | M8 | 53 | 4,39 | |
| CBA50 | 125 | 125/56 | 100 56 70 | 80 50 56 | 50 | 110 | 50 | 95 | 26 | 40 | 28 | 65 | 50 | 80 | 170 | 130 | 220 | 22,5 | M8 | 65,5 | 8,81 | |
| CBA63 | 200 | 160/70 | 125 70 90 | 100 63 70 | 63 | 140 | 63 | 112 | 33 | 48 | 35 | 75 | 63 | 100 | 210 | 160 | 270 | 27,5 | M10 | 77 | 16,50 | |
| CBA70* | 250 | 180/80 | 140 80 100 | 110 70 80 | 70 | 150 | 70 | 130 | 33 | 48 | 38 | 90 | 70 | 110 | 230 | 175 | 300 | 30 | M10 | 90 | 19,70 | |
| CBA80 | 320 | 200/90 | 160 90 110 | 125 80 90 | 80 | 170 | 80 | 140 | 39 | 57 | 43 | 95 | 80 | 125 | 250 | 210 | 320 | 30 | M10 | 96 | 30,18 | |
| CBA90* | 400 | | 180 100 125 | 140 90 100 | 90 | 190 | 90 | 160 | 45 | 66 | 50 | 108 | 90 | 140 | 290 | 230 | 370 | 35 | M10 | 112 | 52,10 | |
| CBA100* | 500 | | 200 110 140 | 160 100 110 | 100 | 210 | 100 | 180 | 45 | 66 | 57 | 120 | 100 | 160 | 315 | 260 | 400 | 45 | M10 | 124 | 73,10 | |
| CBA110* | 635 | | 220 125 160 | 180 110 125 | 110 | 240 | 110 | 200 | 52 | 76 | 59 | 138 | 110 | 180 | 350 | 290 | 445 | 50 | M12 | 140 | 98,80 | |
| CBA125* | 800 | | 250 140 180 | 200 125 140 | 125 | 270 | 125 | 230 | 52 | 76 | 57 | 170 | 125 | 200 | 385 | 320 | 470 | 60 | M12 | 159 | 128,50 | |

*nicht genormte Zwischengrößen
passende Bolzen: PP·f8/PP·m6/PPA·f8/PPA·m6

*not standardised sizes
**counterbore for socket screw DIN EN ISO 4762
suitable pins: PP·f8/PP·m6/PPA·f8/PPA·m6